



# DELIVERY SPECIFICATIONS

**FABEREXPOSIZE**  
VISUALEXPERIENCE

For perfect output quality and rapid processing of orders, it is important that the files be provided as completely as possible. The guidelines below should be followed. If the files provided do not meet these criteria, then this can lead to a delay in production and result in extra costs being required to prepare the visuals for printing.

## Software

Documents from the following programmes can be provided:

- Adobe Indesign CC
- Adobe Illustrator CC
- Adobe Photoshop CC
- PDF files according to the Faberexposize PDF export setting

## Adobe Indesign

Please provide all illustrations/scans including fonts. Preferably a format at 100% If not, then at 10% of the final format.

## Adobe Illustrator

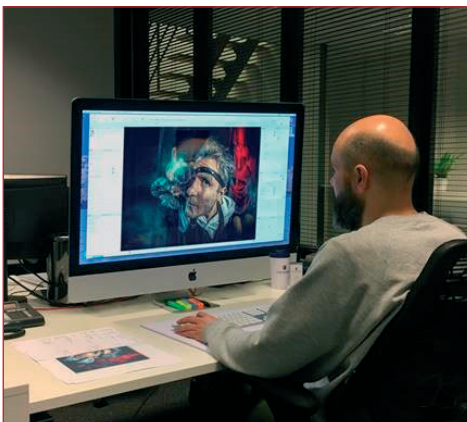
Be sure that the fonts used are converted into font outlines. Please provide imported illustrations/scans.

## Adobe Photoshop

Save images in Photoshop TIFF format in CMYK or RGB. Resolution of images by final format:

- Screens up to 5m and panels: 100 dpi
- Screens between 5 and 10m: 50 dpi
- Screens larger than 10m: 30 dpi

The dpi values listed above are for the best possible resolution. Delivery in higher dpi does not lead to a better output, only to larger file sizes.

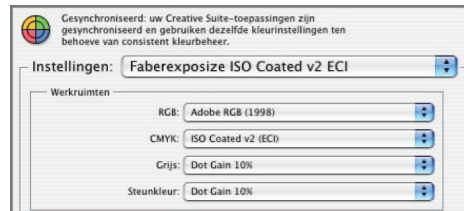


## Colour

### CMYK/RGB

For CMYK, please use - ISO Coated v2.

For RGB, please use - Adobe RGB 1998.



### PMS colours

When using pms colours in your document, ALWAYS use Pantone Solid Coated. Other variations may yield unexpected results. Our RIPs are equipped with an internal Pantone table that approaches Pantone colours as closely as possible. If colour matching is required, we will need an open document. An additional fee may be charged for this.

### Test Print

Please add a test print for reference, including information about the pms colours and special instructions.

## Delivery

- By email, to your contact (max. 10 MB).
- On DVD/USB stick, with ATTN to your contact.
- Via [faberexposize.wetransfer.com](http://faberexposize.wetransfer.com) to your contact. (max 2GB) indicating a clear reference.

## Printing Technique Guidelines

- Straight and level screens for posters, banners, and panels for the flatbed printer all in their final visible size, without overlap and cut marks.
- Double-sided panels in actual physical size including TrimBox and 5mm overlap around the edges, no cut marks.

- Indicate white printing as a supporting colour, separate layer.
- For screens that have to be stretched, add 50 mm of extra image around without cut marks. This is so that after the image is stretched, the image runs over the sides.
- Screens for T-flex frames (flat edge) 20 mm of overflow image around the edges and without cut marks. This extra material is necessary for finishing. If your file does not have any extra material, we will enlarge the file so that the image can be cut.
- Position of texts and logos. Please also take into account the placement of text and logos, place these roughly 10 cm from the edges due to the addition of ducts and hems.
- Documents for silk screening are preferably Adobe Illustrator, transparency retained no flattening, Pantone Solid Coated colour (if poss.) , white lines with a minimal thickness of 2mm due to the chance of blending.  
Exterior use:  
Eye to image distance, large 400 dpi 1:10  
Eye to image distance, small 700 dpi 1:10  
Interior use:  
Eye to image distance, large 700 dpi 1:10  
Eye to image distance, small 1000 dpi 1:10

## Finishing

### Contour cuts/moulding/scoring

Contour moulded or cut, full colour panels and stickers, 5mm overlap mould/cut/score line and/or hole 0.5 pt as supporting colour in separate layer.

For lettering, an Illustrator file (convert text into letter outlines) is sufficient.

If you have questions about the delivery specifications, please contact the studio.